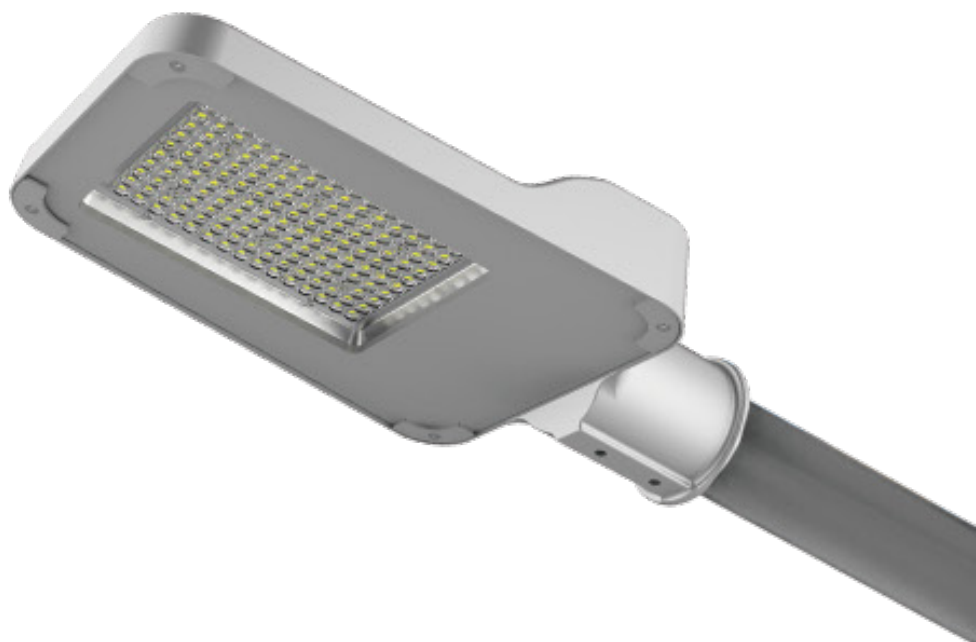


www.ledlucky.net



Blade

LED Street Light

30W/50W/60W/75W



Dimming
Control



DALI
Control

CE RoHS

5
Years
Warranty

Version:1.1
2023-01

01

Tell: +86-755-81795752 / +86-755-29005866
E-mail: lighting@ledlucky.net

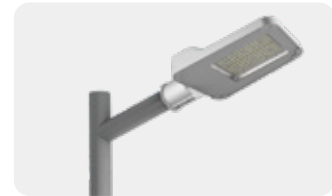
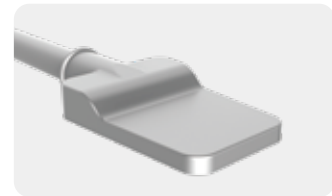
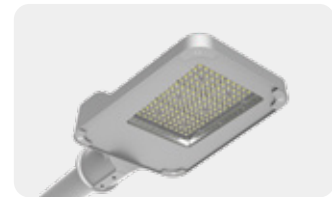
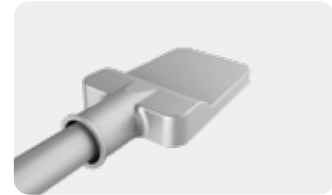
Address: Bldg A, No. 3 Lanjin 7 Road, Pingshan district, Shenzhen, China

APPLICATIONS

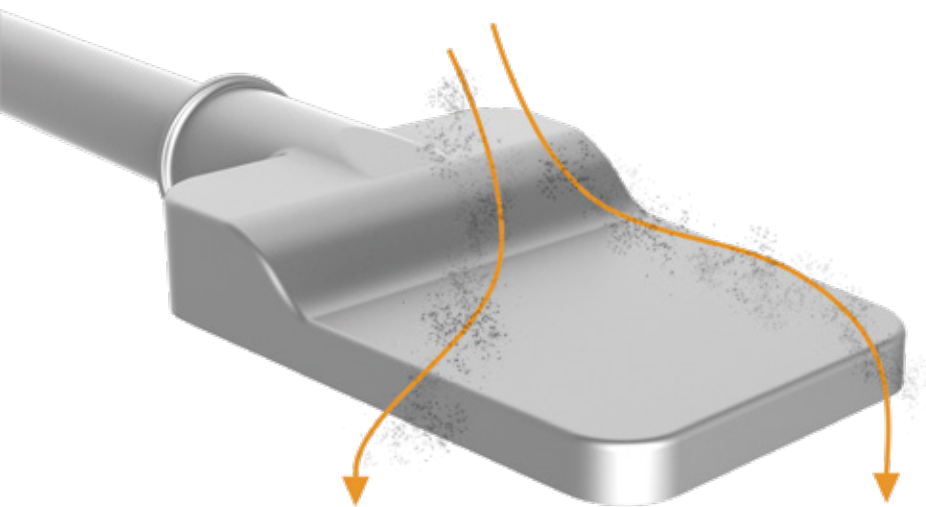
- ✔ City Street
- ✔ Industrial Park
- ✔ Park
- ✔ Country Road
- ✔ Side Road

FEATURES

- ✔ Instant on/ off; No UV/ flickering.
- ✔ Simple & concise design avoids the accumulation of water and ash ensuring better heat transfer.
- ✔ Proper lens specially designed for Type I & Type II-S.
- ✔ ADC12 die-casting material enables better heat dissipation.
- ✔ Built-in SPD increases its surge protection grade.
- ✔ .ies/.ldt files are available.



Simple & concise design to prevent the accumulation of



PRODUCT DATA

General Information

LED Type	Lumileds 3030/Tiandian 2835
Light Efficacy	130lm/W
CCT	4000K/5000K
CRI	70
LED Lifespan	153,000h@L70B10 96,000h@L80B10 46,000h@L90B10
Power Supply	Sosen-EP / Chinese brand
Type of Driver	Non-isolated / Isolated
Driver efficiency	≥0.9
Protection class IEC	Class I (Optional Class II)
Warranty	3 / 5 Years Warranty
Certificate	CE, ROHS

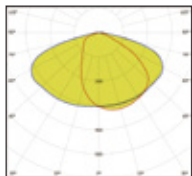
Application Conditions

Operating Temperature -30℃ to +50℃ (Outdoor)

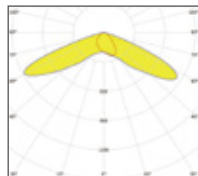
Approval and Application

Ingress protection code	IP66
Mech. impact protection code	IK08
Surge protection	10KV of Surge Protection Device (Standard)

Light Distribution Curve



A029
Type II (80*150deg)



A033
Type I (140*70deg)

Operating and Electrical

Input voltage	220-240Vac/120-277Vac
Input Frequency	50/60Hz
Inrush current	-
Power Factor	≥0.92
THD	≤10%

Mechanical and Housing

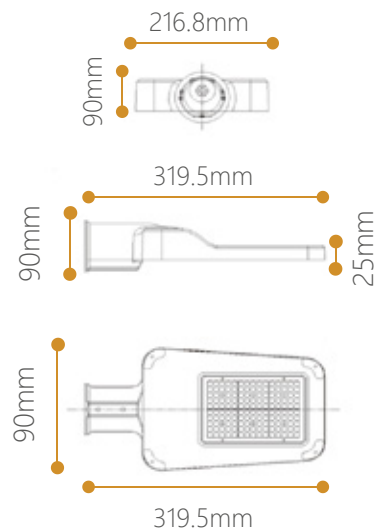
Structure Material	Die casting ADC12
Finish Material	Powder coated
Lens Material	(PC)Polycarbonate
Glass Material	Tempered glass
Fixture Color	Grey RAL9006
Mouting Option	Pole Mounted

Controls and Dimming

Dimmable	Yes
Intelligent Control	0-10V Dimming/DALI

Drawing

30W/50W/60W/75W



PRODUCT PARAMETER

Model Number	Power Consumption (±10%)	Input voltage	CRI	Light Efficiency	Luminous Flux (lm) (±10%)		Beam Angle	Correlated Color Temperature	LED Type	Driver Type
					@4000K	@5000K				
FK-SL30-A33N-HB	30W	120-277VAC 220-240VAC	70	130lm/W	3900	3900	A33 (Type- I)	4000K 5000K	Lumileds3030	Sosen-EP
FK-SL50-A33N-HB	50W				6500	6500				
FK-SL60-A33N-HB	60W				7800	7800				
FK-SL75-A33N-HB	75W				9750	9750				
FK-SL30-A33N-HB	30W	120-277VAC 220-240VAC	70	130lm/W	3900	3900	A33 (Type- I)	4000K 5000K	Tiandian2835	Chinese brand
FK-SL50-A33N-HB	50W				6500	6500				
FK-SL60-A33N-HB	60W				7800	7800				
FK-SL75-A33N-HB	75W				9000	9000				
FK-SL30-A29N-HB	30W	120-277VAC 220-240VAC	70	130lm/W	3900	3900	A29 (Type- II)	4000K 5000K	Lumileds3030	Sosen-EP
FK-SL50-A29N-HB	50W				6500	6500				
FK-SL60-A29N-HB	60W				7800	7800				
FK-SL75-A29N-HB	75W				9750	9750				
FK-SL30-A29N-HB	30W	120-277VAC 220-240VAC	70	130lm/W	3900	3900	A29 (Type- II)	4000K 5000K	Tiandian2835	Chinese brand
FK-SL50-A29N-HB	50W				6500	6500				
FK-SL60-A29N-HB	60W				7800	7800				
FK-SL75-A29N-HB	75W				9750	9750				

PACKAGE

Item.	Luminaire Net Weight	Packing Info	Dimension (inner box) (mm)	Dimension (outer carton) (mm)	GW (Outer carton)	20ft GP	40ft GP	40 HQ
30W	2.48kg	1pcs	N/A	L470*W275*145	3.83kg	1500pcs	3100pcs	3600pcs
50W	2.51kg	1pcs	N/A	L470*W275*145	3.86kg	1500pcs	3100pcs	3600pcs
60W	2.81kg	1pcs	N/A	L470*W275*145	4.16kg	1500pcs	3100pcs	3600pcs
75W	2.83kg	1pcs	N/A	L470*W275*145	4.18kg	1500pcs	3100pcs	3600pcs

ERP REQUIREMENT

Instant Full Light Dimmable

SDCM <5

Starting Time <0.5s

Switching Cycles 25,000times

Life Time 50,000h

L70B10: 153000h
L80B10: 96000h
L90B10: 46000h

Lumen Maintenance 97%



Horizontal Light Distribution Test



Intelligent Life Tester



Strobe Test



Integrating Sphere Spectrometer



3600h Life Time Test

MOUNTING OPTIONS



Pole Mounted

OPTICAL ACCESSORIES

Standard (Script Hook)



Surge Protector
>> 10KV
>> 120-277V
>> IP20 with CE



Glass with 120 Deg



Protection wire



LEDLUCKY Shenzhen



LEDLUCKY Dongguan



LEDLUCKY

LEDLUCKY HOLDINGS COMPANY LIMITED

Adress: Bldg A, No.3, Lanjin Seven Road, Pingshan Shenzhen, China

Web: www.ledlucky.net

E-mail: lighting@ledlucky.net

Tel: +86-755-81795752 / +86-755-29005866