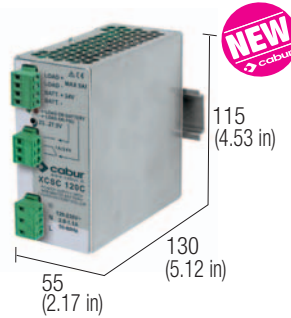


Switching power supply with integrated battery charger

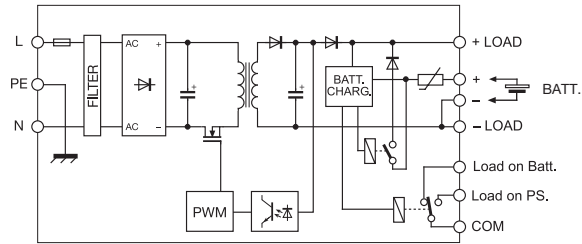
- Suitable for 12 Vdc loads and batteries
- Suitable for lead batteries
- Suitable for charging batteries while feeding loads
- Battery protection circuit
- "Deep discharge" battery protection
- Status display LED and failure contact



NOTES

- The depth dimension includes the terminal blocks and the DIN clamp.
- (2) With 100...127 Vdc input voltage, constant output power and $T_a > 45^\circ\text{C}$, the output current must be derated by 25%
- (3) In addition to the current load, the device supplies about 0.8 A for battery charging
- (4) Over 50°C (122°F) apply a derating $-0.13 \text{ A}/^\circ\text{C}$, max 60°C

BLOCK DIAGRAM



VERSIONS

- Output 12 Vdc 5 A
- Output 24 Vdc 5 A

Cod. XCSC120B

CSC120B

Cod. XCSC120C

CSC120C

APPLICATIONS

INPUT TECHNICAL DATA

- Input rated voltage
- Frequency
- Current @ nominal lout (U_{in} 120 / 230 Vac)
- Inrush peak current
- Power factor
- Internal protection fuse
- External protection on AC line

120–230 Vac (range 90...264 Vac / 100...370 Vdc) (2)
 47...63 Hz
 2.0 A / 1.1 A \pm 10%
 < 20 A
 > 0.6
 T 3.15 A replaceable
 circuit breaker: 4 A - C characteristic - fuse: T 3.15 A

OUTPUT TECHNICAL DATA

- Output voltage with operating power supply
- Output voltage with batteries
- Continuous current
- Overload limit
- Short circuit peak current
- Load regulation
- Ripple @ nominal ratings
- Hold up time @ I_n (U_{in} 120 / 230 Vac)
- Overload / short circuit protections

12.5...15.5 Vdc

23...27.5 Vdc

- 12...14.4 Vdc
- 7 A @ 50°C** (3)
- >11 A for >30 s
- >18 A for >50 ms
- < 1%
- 80 mVpp
- >24 ms / >80 ms

- 24...26.2 Vdc
- 5 A @ 50°C** (3)
- >8 A for >30 s
- >12 A for >50 ms
- < 1%
- 80 mVpp
- >17 ms / >72 ms

- Alarm signals
- Max. charging current

with operating power supply: hiccup at the overload limit with auto reset
 non operating power supply: auto resettable electronic fuse against battery short circuit
 with non operating power supply: threshold-relay against battery deep discharge
 "PSU OK" green LED / failure contact / "BATTERY" red LED
 0.8 A (suitable for sealed lead batteries up to 15 Ah)

GENERAL TECHNICAL DATA

- Efficiency (U_{in} 120 / 230 Vac)
- Dissipated power (U_{in} 120 / 230 Vac)
- Operating temperature range
- Input/output isolation
- Input/ground isolation
- Output/ground isolation
- Standard/approvals
- EMC Standards
- MTBF @ 25°C @ nominal ratings
- Overvoltage category/Pollution degree
- Protection degree
- Connection terminal
- Housing material
- Approx. weight
- Mounting information

>86% / >90%

>90%

21 W / 13 W

< 13 W

-20...+60°C, with derating over 50°C / over temperature protection (4)

1.5 kVac / 60 s SELV output

1.5 kVac / 60 s

0.5 kVac / 60 s

IEC950, EN60950

EN55011, EN61000-6-1

>500'000 h acc. to SN 29500 / >150'000 h acc. to MIL Std. HDBK 217F

II / 2

IP 20 IEC 529 EN60529

2.5 mm² pluggable screw type

aluminium

500 g (17.65 oz)

vertical on rail, allow 10 mm spacing between adjacent components

MOUNTING ACCESSORIES

- Mounting rail type according to IEC60715/TH35-7.5
- Mounting rail type according to IEC60715/G32

PR/3/AC, PR/3/AC/ZB, PR/3/AS, PR/3/AS/ZB